



# Glendale East Public School

SAFE RESPECTFUL LEARNERS



## NEWSLETTER

Week 6, Term 4 2020

20 November 2020

### PRINCIPAL'S MESSAGE

Hello all GEPS family and community members,

We have had an extremely busy past 2 weeks doing all sorts of wonderful things, including sport gala days, having a great time at our year 6 fun day, 2/3M visited the Koala Sanctuary, Kinder 2021 met their year 6 buddies, infants enjoyed gymnastics and together we all celebrated NAIDOC week. Thank you to our wonderful teaching and admin staff who constantly go above and beyond to provide these opportunities for students.

#### **Monday Assembly – 23/11/20**

This Monday we will be holding our weekly assembly via zoom. This will allow us to have parents watch our assembly but also test the Zoom software to ensure we can use it for our upcoming 2020 Presentation Day. Please follow the information below to join our assembly via Zoom. You will need a registered Zoom account and a computer or smart phone to join us.

**Topic:** Monday 23rd Test Assembly

**Time:** Nov 23, 2020 01:00 PM

**Meeting ID:** 630 9527 4634

**Passcode:** 010462

**Join Zoom Meeting – Web address**

<https://bit.ly/3IKZ3ub>

**Presentation Day 2020 – Friday 11<sup>th</sup> December**

The state government has relaxed a few guidelines around allowing parents on site for these events. Schools must comply with the 4 square meter rule for all people participating (including school staff, students, parents and caregivers and visitors). Unfortunately, Glendale East Public School does not have a space big enough for large groups of outside guests/parents/caregivers to attend our end of year events. However, to ensure we continue to be inclusive of parent/caregivers and families, we are setting up the option for the community to participate in a Zoom meeting to view important in-school events.

Our 2020 Presentation Day will be broadcast to the whole community via zoom. There will be three separate parts to the assembly including a K-5 awards presentation, a year 6 awards assembly and then finishing with a Kindergarten graduation. To separate the three distinct sections, there will be breaks to allow for appropriate cleaning and sanitation. In the first break, K – 5 students will return to classrooms and year 6 students will be invited to ask two guests to attend in person this section of the assembly. All Year 6 students will be in the hall and all other classes will watch the Year 6 awards via Zoom in their classrooms. This ensures GEPS adheres to the NSW government's 4sq meter guidelines.

The final, important part of the day, is the Kindergarten Graduation assembly happening at 2pm. This year has been particularly difficult for our littlest members of the school and their parents/caregivers. Our Kindergarten parents have not had the same opportunities to connect, visit and be in the school for special events, so this year we are holding a separate Kindergarten graduation assembly. In this time, Kindergarten will be in the hall and they will be invited to ask a maximum of two (2) visitors to come and watch them receive their graduation award. This is to recognise, that despite the disruptions throughout the year, they are ready to move on to Year 1. It is also a time that Kindergarten parents can get a photo of their child receiving an award, as a way of compensating for all the weekly

8 Margot Avenue Glendale East NSW 2285 Ph: 49549551 F: 49566248

W: <https://glendalee-p.schools.nsw.gov.au> / E: [glendalee-p.school@det.nsw.edu.au](mailto:glendalee-p.school@det.nsw.edu.au)

Facebook: <https://facebook.com/Glendale-East-Public-School-444115352294002/>



# Glendale East Public School

assemblies they have missed throughout the first year of their children's schooling. All other students Year 1 – 6, will be watching via zoom in their classrooms.

Please note that this year, not all children will be receiving awards at our presentation day. Due to time constraints and COVID-19 guidelines, each teacher will be giving out 4 class awards for special achievements. We will be sending home letters to all families of students who will be receiving an award, to ensure parents do not miss the opportunity to watch via zoom to see their child receiving an award.

## **Canteen Closed Monday**

Beginning next week (Monday 23<sup>rd</sup> of November 2020), the canteen's operating days will change. We will be moving to opening the school canteen 4 days a week, instead of 5. **The canteen will now be closed every Monday**, beginning next week (week 7).

This decision has been made to support our volunteers and to ensure we have enough people to open the canteen on the other 4 days.

## **P and C Meeting Wednesday 2<sup>nd</sup> December – 6:30pm**

We are in need of new and enthusiastic members who would like to join our P&C and possibly take on a position such as President, Vice President, Treasurer or Secretary. Currently we have a small dedicated team who will welcome new commers in with welcome arms. If you are interested, please join our P&C meeting on Wednesday 2<sup>nd</sup> December

[Zoom details](#)

Zoom Meeting ID: 678 9352 6865

Passcode: 818046

<https://bit.ly/2UCY6Z0>

**Tim Lewis**

**Principal**

“  
Education is  
the most **POWERFUL**  
**WEAPON**  
which *you* can use  
to *change*  
the **WORLD**.  
”  
-Nelson Mandela



# Glendale East Public School

## Tell Them From Me Survey

One of the most consistent ways our school collects information and feedback from its community to inform school planning is the annual Tell Them From Me survey. The survey gathers anonymous information on student outcomes, demographic factors, growth mindset and socio-emotional outcomes from students, parents and teachers to help us paint a picture of what is working well at our school and what we need to improve in the future.

Students and teachers at GEPS are united in their focus on learning and having a growth mindset. 87% of all students who responded to the survey indicated that when faced with a learning challenge, they would persevere until the task was complete. Students reported a rise in their effort levels by 7% and described their schoolwork as being important to them and that it would help them both in the future and their everyday lives.

Developing strong friendships based on trust and kindness is important to GEPS students. Almost all of our students felt that they had friends they could trust who encourage them to make positive choices here at school. Following that, 85% of our students reported that they followed our whole school expectations and used appropriate behaviour at all times.

Responses from parents came from across all year groups. We were humbled at the acknowledgement from parents that they feel welcome and informed here at GEPS, with responses falling higher than the NSW average for this category. You reported that telephone, social media and emails were of most use for you to remain in contact and in the know about school events.

Our teacher's responses spoke of strong school leadership, especially in the areas of visible learning and tracking student progress. Clear expectations for behaviour and developing a positive learning culture were two other areas teachers reported they felt were main school focuses that we were achieving.

Analysis of the results are still ongoing and areas of focus will be developed to become part of our next 4 year school plan.

Students, staff and parents will again be invited to complete the survey next year to offer their ideas and opinions on how to continue to make our school a safe and supportive place for our students to grow and learn. Thank you to everyone who contributed their thoughts and opinions in this year's survey, we value them highly.

**Emma McVey**  
TTFM Coordinator

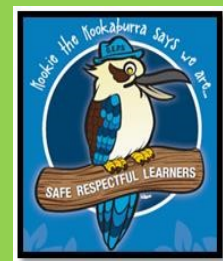
**PBL FOCUS TERM 4**

**Week 7**

**"Stay on Task"**

**Week 8**

**"Use Positive Self  
Talk"**





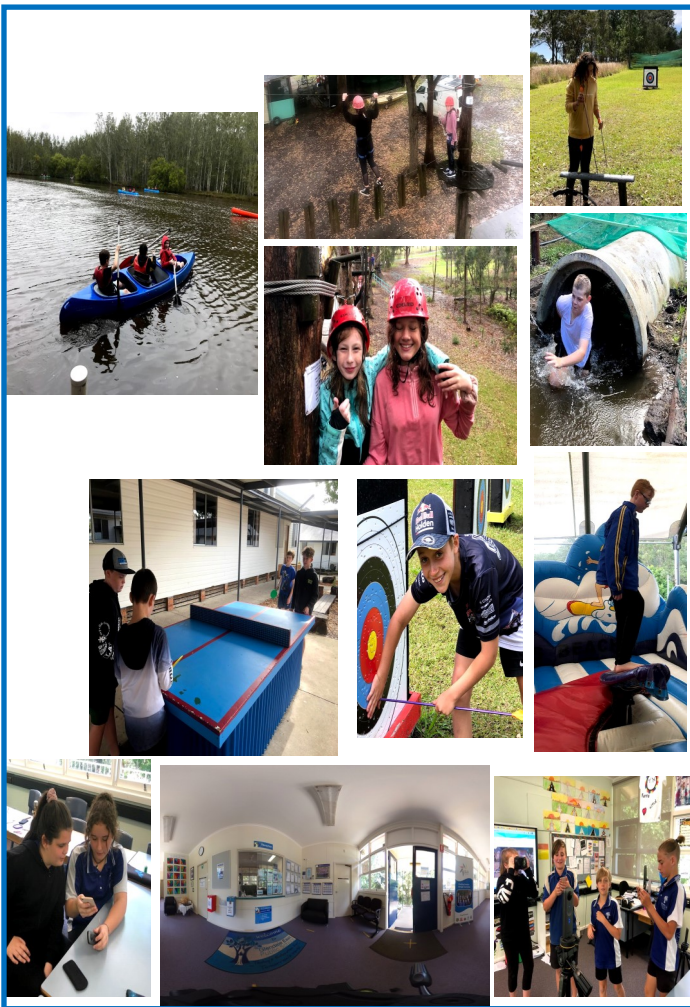


# Glendale East Public School

## Message from 5/6S

It has been a busy and exciting start to Term 4. Peer support started this term and students have done a fantastic job leading younger students. In week 4 Year 6 attended the Great Aussie Bush Camp whilst year 5 had their own 'holiday' at school without year 6 (their words). We have Touch, Soccer and Netball gala days in the coming weeks which students are very excited about. Our STEM project this term has been to take 360 degree photos and create a virtual reality tour of our school using google tours (keep an eye out for this on Facebook in the coming weeks).

Here are some photos of Year 6 camp and student's 360 degree photography skills :



**Joel Sims**  
Class Teacher

## Message from 5/6F

Term 4 is traditionally a crazy time of the school year and with some easing of COVID restrictions we have been able to squeeze in a few extra events to make up for some of the things that have missed out on so far this year. So we are a very busy but happy class of Stage 3 students.

The year 6 camp was enjoyed by all who attended and we had a fantastic time facing challenges like canoeing, rope climbing and 'mud world' despite the wet weather. Our Year 5 students met their Kindergarten buddies this week and did a fabulous job of providing school tours for our 2021 Early Stage One students. All 5&6 student Peer Support leaders have received very positive feedback about the way they have been carrying out these important roles and this program is running very successfully on most Fridays.

Year 6 have done an amazing job of creatively planning a great COVID safe 'Year 6 Fun Day' and this was not only a wonderful day for the whole school but a very successful fundraiser, enabling the students to be able to purchase their gift to the school. Year 6 would like to thank all who supported and helped out with this event.

Finally in the classroom 5/6F have been continuing to work hard towards individual learning goals. Writing is an important whole school focus for teaching and learning and the use of the 'Writing Legends' programme has been a great tool utilised in our classroom, assisting students to achieve their aspirational goals. This week our hard work in creative writing was recognised and we were awarded 'The Number 1 most Prolific Writing Legends'. This really is a huge achievement for 5/6F and a result of their commitment and dedication to their writing.

Out of all the classes that use this programme in Australia and New Zealand we are currently number one!



**Angela Field**  
Class Teacher



# Glendale East Public School

SAFE RESPECTFUL LEARNERS

## NEWSLETTER



### YEAR 6 FUNDAY

On Thursday of Week 6 we celebrated our awesome Year 6 cohort with the Year 6 fun day! Every year, our year 6 students run the show with a day that raises money for their parting gift to the school. It's a spectacular way to say goodbye and to have fun with the school before they leave.

Our GEPS students were encouraged to wear their weirdest and wackiest outfits and they did not disappoint. We wore all the colours of the rainbow and the school became a sea of fun and fabulousness to celebrate the incredible day.

The year 6's organised an exciting range of fun stalls for everyone to enjoy: we could get super sporty shooting some hoops, kicking goals and playing handball, our hair was turned into crazy colours to match the fabulous outfits, and everyone enjoyed a delicious selection of tasty treats which kept them buzzing for hours as we got our groove on at the disco. I think our favourite part of the day was soaking the year 6's with water blasters - safe to say it was a day we won't forget anytime soon!

The GEPS community will dearly miss our year 6's of 2020, and we'd like to share some lovely messages with them:

"Thank you for helping us go up to the office when we fall over!" – Scarlett, K Wombats

"I hope you have fun in high school!" – Matthew, K Possums

"We've had a lot of fun together and I hope you like your new school" – Tilly, 5/6F

"You've done an amazing job at being our school leaders!" – Leo, 4/5Q

Everyone had an awesome day having fun in the sun and we wish the very best of luck to our 2020 Year 6 kids!

**Katrina Pollack, Teacher**



8 Margot Avenue Glendale East NSW 2285 Ph: 49549551 F: 49566248

W: <https://glendalee-p.schools.nsw.gov.au> / E: [glendalee-p.school@det.nsw.edu.au](mailto:glendalee-p.school@det.nsw.edu.au)

Facebook: <https://facebook.com/Glendale-East-Public-School-444115352294002/>





# Glendale East Public School



## CONGRATULATIONS WEEK 6 MERIT AWARD WINNERS

**Zoe G Possums - Cooperative member during maths activities.**

**Matthew Possums - Consistently showing 6 L's in class at all times.**

**Bodhi W Wombats - For always having a positive attitude to every task.**

**Gerti M Wombats - Improved resilience, approaching every task with courage.**

**Lucas Mitchell 1/2A - achieving reading goals.**

**Lyla M 1/2A- always improving and working hard to edit her own writing.**

**Millicent D 1/2BL- Improved spelling choices in her writing, working hard on her word work.**

**Caleb W 1/2BL- Trying his best to be an active listener and participate in class discussions.**

**Archer K 1/2I - For excellent effort and improvement in all class discussions and activities.**

**Izaiah A 1/2I - For excellent improvements in topic talks and communicating to his peers.**

**Koby J 2/3M - Giving 100% in all Maths Group lessons.**

**Isabella F 2/3M - for her note taking and research skills.**

**Sarah C 3/4L- making a smooth transition back into the classroom and always trying her hardest.**

**Blake W 3/4L- always being an honest and reliable member of our class.**

**Jackson B 4/5Q- Active participation to Mac Lit.**

**Laylah G 4/5Q - for her effort when working in small groups during Maths.**

**Jasmine D 5/6F - For the improved, effective use of learnt spelling strategies to improve writing.**

**Abigail C 5/6F - For outstanding effort and application to all writing tasks including the effective use of feedback.**

**Ally Moss 5/6S - Consistent application to all learning areas.**

**Chelsea Harvey 5/6S - Refining her writing skills by applying feedback.**

## PRINCIPAL AWARD

**Zahra Forbes - Incredibly positive attitude towards weekly Library sessions.**

**Declan Allan - Amazing "Book Creator" design and always displaying a positive attitude in the Library.**

8 Margot Avenue Glendale East NSW 2285 Ph: 49549551 F: 49566248

W: <https://glendalee-p.schools.nsw.gov.au> / E: [glendalee-p.school@det.nsw.edu.au](mailto:glendalee-p.school@det.nsw.edu.au)

Facebook: <https://facebook.com/Glendale-East-Public-School-444115352294002/>

# CLAIM TWO \$100 ACTIVE KIDS VOUCHERS



All NSW school-enrolled children are eligible for **two \$100 Active Kids vouchers** each year. The vouchers can be used with any approved Active Kids provider, to help cover costs towards registration or membership fees for sport and active recreation. **Voucher one is valid January to December** and **voucher two is valid July to December**. After 1 July 2020, the second voucher can be claimed immediately after the first voucher.

## HOW TO CLAIM YOUR VOUCHERS



- 1** Visit [service.nsw.gov.au](http://service.nsw.gov.au) and login to your MyServiceNSW Account
- 2** Click on the Active Kids icon found in your SERVICE tab
- 3** Fill out the requested information (you will need your current Medicare card)
- 4** Print a copy of each voucher or email it to yourself

Visit [sport.nsw.gov.au/activekids](http://sport.nsw.gov.au/activekids) for terms & conditions and FAQs

## HOW TO USE YOUR VOUCHERS

- 1** Find a provider by visiting our website: [sport.nsw.gov.au/activekids](http://sport.nsw.gov.au/activekids)
- 2** Once you have chosen an activity give the voucher number to your activity provider, or log onto your provider's website and enter the voucher number



\*Vouchers can always be found in your MyServiceNSW account by looking in the My Applications tab



# CLAIM TWO \$100 ACTIVE KIDS VOUCHERS



All NSW school-enrolled children are eligible for **two \$100 Active Kids vouchers** each year. The vouchers can be used with any approved Active Kids provider, to help cover costs towards registration or membership fees for sport and active recreation. **Voucher one is valid January to December** and **voucher two is valid July to December**. After 1 July 2020, the second voucher can be claimed immediately after the first voucher.

## HOW TO CLAIM YOUR VOUCHERS



Mary Sm|



- 1** Visit [service.nsw.gov.au](http://service.nsw.gov.au) and login to your MyServiceNSW Account
- 2** Click on the Active Kids icon found in your SERVICE tab
- 3** Fill out the requested information (you will need your current Medicare card)
- 4** Print a copy of each voucher or email it to yourself

Visit [sport.nsw.gov.au/activekids](http://sport.nsw.gov.au/activekids) for terms & conditions and FAQs

## HOW TO USE YOUR VOUCHERS

- 1** Find a provider by visiting our website: [sport.nsw.gov.au/activekids](http://sport.nsw.gov.au/activekids)
- 2** Once you have chosen an activity give the voucher number to your activity provider, or log onto your provider's website and enter the voucher number

\*Vouchers can always be found in your MyServiceNSW account by looking in the My Applications tab







# Glendale East Public School

## FROM THE OFFICE

Just a reminder that all money for all upcoming events **MUST be returned to the office prior to the due by date as advised on notes.** The office cannot accept any further payments after this date. Unfortunately, if **payment is presented to the office after this date it will be returned home and your child cannot attend the excursion.**

[Families are encouraged to use the POP \(parent online payment\) link on our school website.](#)



**NO Uniform payments are to be made through the school parent online payment system.** Uniforms are to be purchased on-line through Country Feeling on their website at [www.countryfeelinguniforms.com.au](http://www.countryfeelinguniforms.com.au)

**Payments cannot be received after 3pm** as the till must be closed and reconciled by the end of our working day.

**Cash payments** can be left after 3pm and will be receipted the next day, however we cannot give change after 3pm.

**Eftpos cannot be processed after 3pm** as it must be included in the day's banking.

**Phone payments.** To comply with the Payment Card Data Security Standard we can no longer accept credit card details over the phone. We encourage parents to use our online payment system through our school website or cash/card at the school office.

[Department of Education Visitors sign on requirements](#)

All visitors to the school site are reminded to please sign on and off in the office visitors' book every time you visit between the hours of 9am to 3pm for a specific purpose for example; meeting with teacher, parent helpers, canteen helpers etc. This does NOT include assemblies.



[Messages for Students](#)

We respectfully ask that you discuss with your children prior to the school day the arrangements for afternoon. As we are unable to interrupt teachers. during class time to pass on messages.



## [Contacting Teachers](#)

Just to remind you that the best way to contact your child's teacher is via our school email address.

The address is:

**glendalee-  
p.school@det.nsw.edu.au**

Please attention the email to the teacher you wish to speak with and include your child's name and a contact number.

## [Medications](#)

If medication is required during school hours, then it must be approved by the Principal.

Parents/carers must complete a medication form if a child requires a specific medication or ongoing health management. **A letter from the prescribing doctor will be required also.** All long term prescribed medication will need to be given to the office in Webster Packaging and short term medication in original packaging labelled by the dispensing Chemist as per the Department of Education Policy.

## [Transporting students by private vehicles on school business.](#)

From time to time, it is necessary for our students to be transported by private vehicle. Parents who volunteer to transport students are reminded the following documentation is required:

- Parent Driver Declaration Form
- a copy of the current Vehicle Registration
- A copy of a current Drivers Licence
- Appendix 5 Form
- 100 Points of Identification

Please provide this information to the office prior to the excursion if you have agreed to transport students other than your own child/ren by private vehicle. This will assist our school to comply with Department of Education Procedures.



8 Margot Avenue Glendale East NSW 2285 Ph: 49549551 F: 49566248

W: <https://glendalee-p.schools.nsw.gov.au> / E: [glendalee-p.school@det.nsw.edu.au](mailto:glendalee-p.school@det.nsw.edu.au)

Facebook: <https://facebook.com/Glendale-East-Public-School-444115352294002/>

# Canteen Glendale east



## FRUIT & SALAD

pieces of fruit	\$1.00	🍎
apple slinky	\$1.00	🍎
watermelon (seasonal)	\$0.50	🍉
fruit skewers (seasonal)	\$0.50	🍌
orange wedges: fresh or frozen	\$0.20	🍊
apple wedges	\$0.20	🍏
small salad	\$3.00	🥗
large salad	\$4.00	🥗

## SNACKS

sea salt chips	\$1.20	🍟
grainwaxes	\$1.20	🍟
diet jelly cups	\$0.50	🍌
canteen made plain popcorn	\$0.50	🍌

## ICE BLOCKS

snap sticks – half	\$0.50	🍌
snap sticks – full flavours below	\$0.80	🍌
raspberry, pineapple, grape, sour grape, sour raspberry	\$0.80	🍌
choc mony	\$0.80	🍌
moosies: chocolate, blueberry	\$1.00	🍌
ice mony TNT flavours below	\$0.80	🍌
berry blast, blue raspberry	\$0.80	🍌
frozen bevco cups incl. spoon	\$0.60	🍌

## DRINKS

lite chocolate milk	\$2.00	🥛
lite strawberry milk	\$2.00	🥛
vanilla malt milk	\$2.00	🥛
golden circle popper flavours below	\$1.20	🥛
tropical, orange, apple, apple blackcurrant	\$1.20	🥛
chill i's flavours below	\$2.00	🥛
orange pasito, cola, raspberry, grape, blackcurrant	\$2.00	🥛
bevco juice cups flavours below	\$0.50	🥛
orange, apple & blackcurrant	\$1.60	🥛
large water	\$1.60	🥛
small water	\$1.00	🥛

## NOTE:

**BYO lunch bag or add 5c on each order**  
 All lunch orders must be at the canteen by 9.30am  
 No L.O.I's, please see Mr Forbes if needed!  
 No hot food at recess  
 No reheating food from home  
 Noodle cups allowed: \$0.30 surcharge  
 Homemade toasters: \$0.30 surcharge  
 Bring noodle cups & toasters to canteen by 9.30am

## TOASTIES

ham & cheese	\$2.50	🍞
ham, cheese & tomato	\$3.00	🍞
chicken & cheese	\$3.00	🍞
cheese	\$2.20	🍞

## CANTEEN MADE PIZZAS

ham & pineapple	\$3.00	🍕
cheese	\$2.50	🍕
chicken & cheese	\$3.50	🍕
ham & cheese	\$3.00	🍕

## HOT FOOD

beef lasagne	\$3.00	🍲
twista pasta	\$3.00	🍲
party pies	\$2.00	🥧
sausage rolls	\$2.00	🥧
chicken nuggets (4)	\$2.00	🍗
chicken sticks (4)	\$2.00	🍗
chicken tender (1)	\$1.30	🍗
tomato sauce	\$0.40	🍷
bbq sauce	\$0.40	🍷

## BURGERS

chicken burger: plain	\$3.00	🍔
chicken burger: cheese	\$3.50	🍔
chicken burger: lettuce & cheese	\$3.80	🍔
chicken burger: salad	\$4.00	🍔
lean beef burger	\$3.00	🍔
lean beef burger: cheese	\$3.50	🍔
lean beef burger: salad	\$4.00	🍔

Please ask for sauce or mayonnaise, otherwise burgers will be made without.

## WRAPS

chicken (diced) & salad	\$4.00	🌯
chicken (diced) & cheese	\$3.80	🌯
chicken (tender) & salad	\$4.00	🌯
chicken (tender) & cheese	\$3.80	🌯
ham & salad	\$4.00	🌯

## SANDWICHES

vegemite	\$1.50	🥪
cheese	\$2.00	🥪
ham	\$2.00	🥪
ham, cheese & tomato	\$2.80	🥪
salad	\$3.00	🥪
+ meat	\$0.50	🥪

NSW Healthy School Canteen Strategy:  
 🍎 everyday item  
 🍷 occasional item



Try-Ons available at OOSH  
 January 2020 Try On Days  
 16.1.20 – 8-9am  
 22.1.20 – 4-5pm



DESCRIPTION	\$	SIZE	QTY
UNISEX POLO	\$27.50		
UNISEX FLEECE JACKET	\$42		
UNISEX SHORTS - Microfibre	\$15		
UNISEX BUCKET HAT	\$13		
GIRLS SKORT/CULOTTES	\$20		
BOYS CARGO LONG PANTS	\$26		
GIRLS SUMMER TUNIC	\$40		

A FULL COMPLIMENT OF TRY ON SIZES  
 AVAILABLE AT SCHOOL. ASK THE OFFICE.

ONLINE ORDERING ONLY

[www.countryfeelinguniforms.com.au](http://www.countryfeelinguniforms.com.au)

Orders will be delivered to the School for collection  
 OR

Posted to your home address for \$10  
 Sharee Rock 0414 651 211



# Why attendance matters

When your child misses school they miss important opportunities to...



Learn



Make friends



Build skills through fun

education.nsw.gov.au



## Days missed = years lost

A day here and there doesn't seem like much, but...

When your child misses just...

they miss weeks per year

and years over their school life

**1** day per fortnight  = **4** weeks  = Over **1** year missed

**1** day per week  = **8** weeks  = Over **2.5** years missed

education.nsw.gov.au

**LAKE MACQUARIE CITY**

## Safety around schools

### Road rules in school zones

**Pedestrian crossings**  
You cannot stop within 20 metres before a pedestrian crossing or 10 metres after a pedestrian crossing unless there is a control sign permitting parking.  
*Minimum penalty: \$439 and two demerit points*

**Double parking**  
You may not stop on the road alongside to another vehicle at any time even to drop off or pick up passengers.  
*Minimum penalty: \$330 and two demerit points*

**Parking on a verge**  
You cannot stop or park on a verge area (footpath, nature strip, dividing strip or kerb).  
*Minimum penalty: \$183 and two demerit points*

**Slow down**  
Stick to the 40km/h speed limit in a school zone and look out for children who may be about.

**Kiss and ride**  
Some schools have 'kiss and ride' or 'drop-off and pick-up zones' for children in 'No Parking' zones. If your school has a program in place, remember to always drop off or pick up your child from the designated zone and follow the school's procedures. You can stop in a Kiss and ride area for two minutes only to pick up passengers and you must stay within three metres of the vehicle.  
If your school does not have a 'kiss and ride' program in place please use the 'No Parking' zone to drop off and pick up passengers.

### PARKING RESTRICTION SIGNS

**NO STOPPING**  
You cannot stop here  
A driver must not stop in a no stopping zone.  
*Minimum penalty: \$330 and two demerit points*

**BUS ZONE**  
You cannot stop here  
You are not allowed to stop your vehicle unless you are driving a bus.  
*Minimum penalty: \$330 and two demerit points*

**No Parking**  
You can stop here for two minutes only  
You have no more than two minutes to drop off or pick up passengers or goods and the driver must stay within three metres of the vehicle.  
*Minimum penalty: \$183 and two demerit points*

**P ONLY**  
You cannot stop here  
Unless a current Mobility Parking Scheme (MPS) permit is displayed.  
*Minimum penalty: \$561 and one demerit point*

02 4921 0333 | lakemac.com.au  
council@lakemac.nsw.gov.au