

GEPS NEWS

Term 1, Week 6

Thursday 5th March 2015



Glendaleeast.com

Glendale East Public School
8 Margot Street
GLENDALE 2285
Phone: 4954 9551
Fax: 4956 6248



CREATIVE ARTS



To give students every opportunity to find things that interest them at school we will be running a number of creative arts groups at lunchtimes. These include Dance (for fun), Yoga, Craft, music making and choir. Children can participate in as many of these as they like or none at all. Col Hatchman will be continuing with his drumming program on Tuesdays also.

Attendance

If you are planning on taking your children out of school for holidays the Department of Education's policy states that this will be unjustified leave and that Principals can no longer exempt students from school for family vacations. Students with large amounts of outstanding leave can be referred to the Home School Liaison Officer which can result in serious fines of up to \$11000.

Our attendance target for the year is to have students attend school 95% of the time. Our whole school attendance rate currently sits at 93.5% Please ensure your child attends school every day!

Appointments

It has recently come to my attention that a lot of teachers class time is being taken up by people who just want "30 seconds" to chat. Whilst staff at the school make every effort to be approachable and care deeply for your children's education and wellbeing their ultimate job is to teach. If you have information that is important for your child's teacher to know please find them before the 9am bell. If you require a longer discussion please make an appointment that for a time that is mutually agreeable. Teachers spend many hours planning for classes and as you can imagine a number 5 minute chats can severely impact the time that your child's teacher has to prepare. Please be considerate of all the children in the class and their learning.

Rugby League Zone Trials

Zone trials for Rugby League will be held tomorrow at Bill Bower oval in Glendale. Thanks to all those kids that nominated and good luck. Who knows is there a future Cameron Smith out there?

BYOD

Glendale East is leading the way as one of the only public schools in Newcastle to incorporate Bring Your Own Device (BYOD) in our stage 3 area. Thank you to all those parents who have supported this initiative by allowing their students to bring their own machines. If you have reservations about sending a machine to school please be aware that there has never been an incident at GEPS of theft and the students are very careful and responsible in caring for and using their device. Whilst online learning is only one facet of your child's education it is becoming more and more important as we prepare your children for high school and future careers in the information age.

Leaders

Years 5 and 6 are important times for students to develop leadership capabilities. Along with having the opportunity for students to be elected as school leaders there are also opportunities for other students to develop these capabilities. One of the strategies that the school is currently involved in is allowing older students to organise craft activities for younger students at lunch time once per week. All students have thoroughly enjoyed this program, well done kids!

Zone Girls Soccer Trials

Trials for the Zone Girls Soccer team will be held shortly. If you have a daughter who plays high level soccer please contact the school. Zone trials are extremely competitive and children require an excellent level of skill to be selected in these teams.

Parking

There have been a number of fines given out recently in Pandel Street for inappropriate parking or for standing too long in the kiss and ride zone. Please be aware that police patrol this area regularly and whilst the fines are significant inappropriate use of this space causes frustration for all members of the school community.

SCHOOL ZONE PARKING OFFENCES

Increased penalties for School Zones. Current as at 1 July 2014



Means that in the area in the direction of the arrow, you **must NOT STOP your vehicle** at any point on the road or kerb, unless there is a medical or other emergency.

Maximum Penalty

\$415

+ 2 Demerit Points



Means that you have no more than 2 minutes for drop-offs or pick-ups of passengers or goods and the driver must stay within 3 metres of your vehicle.

Penalty

\$173

+ 2 Demerit Points

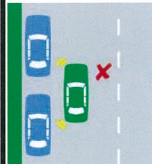


Means that in the direction of the arrow or arrows you are not allowed to stop your vehicle unless you are driving a bus.

Penalty

\$311

+ 2 Demerit Points



DOUBLE PARKING

You are **NOT PERMITTED** to stop or park your vehicle alongside another vehicle that is already parked parallel to the kerb.

Penalty

\$311

+ 2 Demerit Points

- STOP in a NO STOPPING zone: **\$311 + 2 Demerit Points**, or STOP on or near a Children's or Pedestrian Crossing: **\$415 + 2 Demerit Points**
- STOP on path/strip in built up area: **\$173 + 2 Demerit Points**
- STOP or Park in a Disabled Marked Area without a permit: **\$519**

Please Note: fines subject to change without notice. Current to 30 June 2015. These penalties apply to offences in school zones during posted school hours.

School Fees

The school has set the voluntary contributions for your child's education this year at **\$44 per student**. This equates to approximately \$2.50 per week or 50c per day. Included in this will be your child's licence to Mathematics or reading eggs depending on the age of the child and all the resources that they require for the school year. Classroom teachers may require additional resources for projects or just to have in class.

School Fences

There has been some reports recently of unacceptable incidents occurring outside of school hours on the school grounds including trespassing. As a result the school is currently negotiating with the DEC and contractors to install large security fences at the Pandel, Margot and Clarence Street gates. It is not viable to completely fence the school however by cutting off access points we are hoping to restrict people from accessing the school or using it as a thoroughfare.



Fair Play OOSH & Vacation Care at Boolaroo Public School

NOW Servicing the local children & families of Lake Macquarie area

Before school care 7 - 9am (Breakfast included)
After school care 245 - 6pm (Afternoon Tea Included)

School Drop off and School Pick up now commencing at your school **NOW**

Contact our friendly staff for more information

Ph: **0478 106 602**

Email: boolaroo@fairplayoosh.com.au

Located at Boolaroo Public School
Main Road, Boolaroo, NSW

IS YOUR CHILD A SMART SCHOOL SAVER?

We measured the 'Savings IQ' of the nation and found Australians who learn about money at school grow up to become smarter savers.

To find the next generation of savers, we're launching a national competition.

Have your child tell us in 50 words or less what they are saving for, and how they plan to save their money to achieve it and they could win:

- An iPad for themselves and one for their school (six regional winners)
- \$1,000 for their savings (one national winner)

Enter now at commbank.com.au/smartschoolsavers



Things to know before you Gam: Conditions apply, and commbank.com.au/smartschoolsavers for details. Limit of one entry per person. iPad is a trademark of Apple Inc., registered in the U.S. and other countries.

News from KE

The students in KE have made an awesome start to big school. The classroom has become a very busy place as they participate in a huge variety of activities as part of their learning. The children have also been getting to know one another. The following are some of their observations about their common characteristics as well as their differences.

Richard and Jayden both have brown hair,
BUT
Richard likes Weetbix and Jayden likes toast.



Piper and Leila-Jo both have curly hair
BUT
Piper has blonde hair and Leila-Jo has brown hair.



April W. and Tilly both have freckles
BUT
April likes Nutella and Tilly likes Vegemite.



Sophie and Hunter both have blue eyes
BUT
Sophie wears glasses and Hunter doesn't.



Tyrone and Adasyn both like playing Zap.
BUT
Tyrone has brown eyes and Adasyn has blue eyes.



Joe and Matthew love handball,
BUT
Joe loves noodles and Matty loves spaghetti.



Wendy and April M both like skipping
BUT
Wendy loves strawberry jam and April loves blueberry jam.



Codyn and Isabella both like playing Hide and Seek
BUT
Codyn loves calamari and Isabella loves broccoli.



Brody and Dakota both have blue eyes
BUT
Dakota has curly hair and Brody has straight hair





say cheese

School Photo Day is 17 March 2015

Have your child's school memories captured forever

Please take time to read the relevant information on the MSP Photography payment envelopes and remember these helpful points:



- Don't seal envelopes inside each other. You can pay for all children in one envelope however each child needs to have their own envelope on photo day
- Family envelopes are available at the school office upon *request*
- Please enclose correct money as no change is given. Cash and money orders only (sorry no credit card accepted)

For any enquiries, please feel free to contact us

e admin.nhvcc@msp.com.au

p +61 2 4966 8292

f +61 2 4966 8293

www.msp.com.au

Term 1 2015

week	Monday	Tuesday	Wednesday	Thursday	Friday	SAT-SUN
6	2nd March Uniform Shop open early morning	3rd March Chaplain at GEPS School Counsellor at GEPS	4th March Chaplain at GEPS	5th March Newsletter	6th March	
7	9th March Uniform Shop open early morning	10th March Chaplain at GEPS School Counsellor at GEPS	11th March Chaplain at GEPS	12th March	13th March Assembly	
8	16th March Uniform Shop open early morning	17th March Chaplain at GEPS SCHOOL PHOTOS School Counsellor at GEPS	18th March Chaplain at GEPS	19th March Newsletter	20th March	
9	23rd March Uniform Shop open early morning	24th March Chaplain at GEPS School Counsellor at GEPS	25th March Chaplain at GEPS	26th March	27th March Assembly	
10	30th March Uniform Shop open early morning	31st March Chaplain at GEPS School Counsellor at GEPS	1st April Chaplain at GEPS	2nd April Easter Hat Parade Newsletter	3rd April	